

## Selected References

**Year:** 2005  
**Project:** Ford; Gear Box Production  
**Location:** Kosice, Slovakia  
**Product:** Betocrete 406  
2.000 m<sup>3</sup> concrete for  
waste water treatment  
plant  
**Description:**



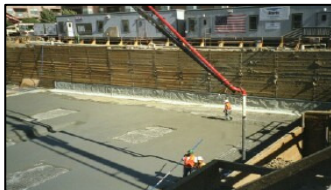
**Year:** 2006  
**Project:** Observatory Roque de los Muchachos  
**Location:** La Palma, Spanien  
**Product:** Remicrete SP10  
Foundation slab of a  
new observatory  
**Description:**



**Year:** 2005  
**Project:** Marina of Tzacorte  
**Location:** La Palma, Spain  
**Product:** Savemix 2000  
Concreting of quays  
**Description:**



**Year:** 2002  
**Project:** 200 Brannan Street  
**Location:** San Francisco, USA  
**Product:** Betocrete 406  
Foundation, pillars  
**Description:**



[www.elitstroy.su](http://www.elitstroy.su)

8 (495) 648-52-04

[mail@elitstroy.su](mailto:mail@elitstroy.su)

**Year:** 2001  
**Project:** 1009 Weston Lane  
**Location:** Austin, TX, USA  
**Product:** Betocrete 406  
**Description:** Foundation, walls

**Year:** 2000  
**Project:** NYDEP Building  
**Location:** New York, USA  
**Product:** Betocrete 406  
**Description:** Foundation slab

**Year:** 2001  
**Project:** Atkins Highschool  
**Location:** Russelville, USA  
**Product:** Betocrete 406  
**Description:** Concreting of oil separators

**Year:** 2001  
**Project:** Public School 32  
**Location:** Bronx, NY, USA  
**Product:** Betocrete 406

**Description:** Slabs and walls of pool

**Year:** until now  
**Project:** Precast elements  
**Location:** Mall Beton, Germany  
**Product:** Remicrete SP10, Betocrete 406  
Precast SCC for pipes  
and waste water  
**Description:** treatment plants



**Year:** 2003  
**Project:** "Gläserne Fabrik", Volkswagen  
**Location:** Dresden, Germany  
**Product:** Remicolor Carbon

**Description:** Coloured concrete slabs



**Year:** 2003  
**Project:** Fishing harbour

[www.elitstroy.su](http://www.elitstroy.su)

8 (495) 648-52-04

[mail@elitstroy.su](mailto:mail@elitstroy.su)

**Location:** Rowy, Poland  
**Product:** Betocrete 406  
**Description:** Concreting of port entrance; increased freeze-thaw and de-icing agent resistance

**Year:** 2005

**Project:** US STEEL, Zinc plate production  
**Location:** Kosice, Slovakia  
**Product:** Betocrete 406; Ruxolith T3  
**Description:** Concreting of a 3 m thick foundation slab



**Year:** 2006

**Project:** New warehouse  
**Location:** Bronx, NY; USA  
**Product:** Betocrete C-16  
**Description:** 1.000 m<sup>3</sup> concrete for walls and floors



**Year:** 2006

**Project:** Betance Community Center  
**Location:** Bronx, NY; USA  
**Product:** Betocrete C-16  
**Description:** Salbs; dosage quantity 2%

**Year:** 2006

**Project:** 400 West 55th St.  
**Location:** NY; USA  
**Product:** Betocrete C-16  
**Description:** Elevator pits; dosage quantity 2%

[www.elitstroy.su](http://www.elitstroy.su)

8 (495) 648-52-04

[mail@elitstroy.su](mailto:mail@elitstroy.su)

**Year:** 2006

**Project:** Water Purification Plant

**Location:** Wisconsin; USA

**Product:** Betocrete C-16

**Description:** Water storage tanks;  
dosage quantity 3%

**Year:** 2006

Condominium

**Project:** "Breitenleerstrasse"

**Location:** Vienna; Austria

**Product:** Betocrete C-16

**Description:** Waterproofing of  
balconies



**Year:** 2006

Job Site "Universale  
Bau"

**Location:** Vienna; Austria

**Product:** Betocrete C-16

**Description:** Waterproofing of filling  
concrete for sandwich  
elements



**Year:** 2006

Job Site "Dr. Ludwig  
Strasse"

**Location:** Vienna; Austria

**Product:** Betocrete C-16

**Description:** Waterproofing of  
foundations of a  
condominium



[www.elitstroy.su](http://www.elitstroy.su)

8 (495) 648-52-04

[mail@elitstroy.su](mailto:mail@elitstroy.su)

**Year** 2006  
**Project:** Reconstruction of the Plaza Espagna  
**Location:** Tenerife, Spain  
**Product:** Remicrete SP10

**Description:** Concreting of the foundations and parking garages, 20.000 cbm of concrete in section I



**Year** 2006  
**Project:** Caldecotte Lakeside Project  
**Location:** Milton Keynes, UK  
**Product:** Betocrete C-16

**Description:** 2000 m<sup>3</sup> of waterproof foundations, walls and pilings with 15 tons of Betocrete C-16



**Year:** 2006/2007  
**Project:** New Administration Building with car park  
**Location:** Guernsey, UK  
**Produkt:** Betocrete C-16

**Description:** Subsoil slab and walls from waterproof concrete with Betocrete C-16



[www.elitstroy.su](http://www.elitstroy.su)

8 (495) 648-52-04

[mail@elitstroy.su](mailto:mail@elitstroy.su)

**Year:** 2007

**Project:** BBI Bank & Shopping Centre

**Location:** Sarajevo, Bosnia

**Produkt:** Betocrete C-17

**Description:** 12.000m<sup>3</sup> of waterproof concrete in slabs and foundation; 80 tons of Betocrete C-17 used



**Year:** 2006

**Project:** Metro Schottenring U2

**Location:** Vienna; Austria  
Betocrete C-16; Aquafin-IC

**Product:**

**Description:** 17 meters of tunnel works at Danube river



[www.elitstroy.su](http://www.elitstroy.su)

8 (495) 648-52-04

[mail@elitstroy.su](mailto:mail@elitstroy.su)