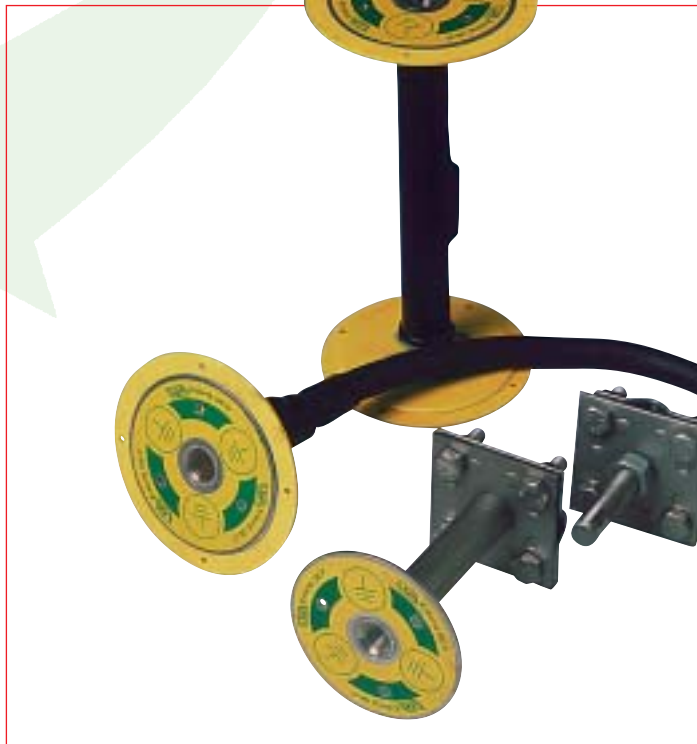




www.prohodka.su
 +7 /495/ 648-52-04
 mail@prohodka.su

GE Structural Earth

- Insulated bushings, thus faultless measurements.
- Earthings suitable for equipotential bonding.
- Earth connection points available for all applications.
- Stainless steel design therefore no corrosion.
- High safety due to connection threads and bolts of size M12.
- Gas- and watertight.
- Suitable as point of separation for measuring.
- Wall and ceiling installation flush with formwork.
- Permanent identification of the earthing type.
- Earthings available in nearly all laying-out lengths.



The UGA structural earth GE is available as duct, potential, reinforcement and subsequent earthing in rigid and flexible design for many ranges of application.



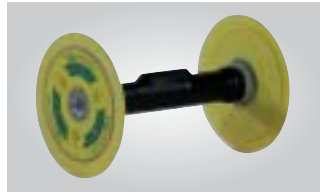
SYSTEM-TECHNIK

Leading in ideas

GE

Structural Earth

www.prohodka.su
+7 /495/ 648-52-04
mail@prohodka.su

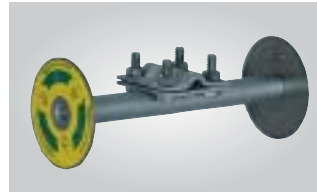


Duct Earthing

Application / Specifications Text
Rigid insulated duct for flush imbedding into concrete with connection thread M12 on both sides.

order no.: GE-D/L

(L = wall thickness in mm)

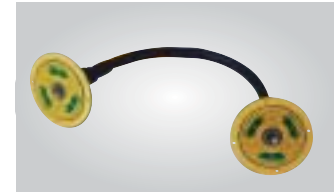


Duct Potential Earthing GE-D-P/L

Application / Specifications Text
Rigid duct with centrally welded four-wire connector for flush imbedding into concrete with connection thread M12 on both sides.

order no.: GE-D-P/L

(L = wall thickness in mm)

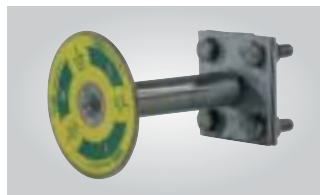


Flexible Duct Earthing

Application / Specifications Text
Flexible insulated duct for flush imbedding into concrete with connection thread M12 on both sides for a wall thickness of 150-500 mm.

order no.: GE-FD/L

(L = standard length 500 mm or 320 mm)

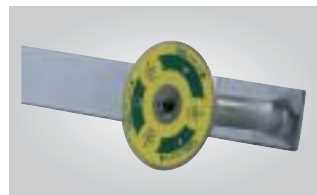


Potential Earthing

Application / Specifications Text
Rigid earthing fixed point with welded four-wire connector for the connection of earthing systems, derivations, and reinforcements for flush imbedding into concrete with connection thread M12 on one side.

order no.: GE-P

(L = standard length ca. 120 mm)
Clamp connection for earthing steel tape in the wall (basement earth)



Reinforcement Earthing with steel tape 40 x 5

Application / Specifications Text
Rigid earthing fixed point with welded steel tape for welding to a reinforcement and for flush imbedding into concrete with connection thread M12 on one side.

order no.: GE-AB

(L = standard length 70 mm)
Steel tape 300 mm long



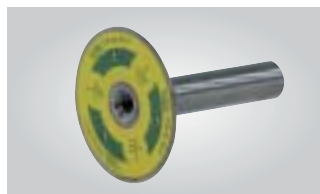
Half-Round Connector

order no.: GE-FRV
(design:
zinc-coated \triangle VZ
stainless steel \triangle V2A)



Connection Bolt M12

order no.: GE-ABM 12
(design:
zinc-coated \triangle VZ
stainless steel \triangle V2A)

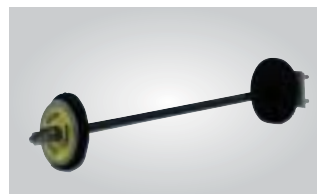


Reinforcement Earthing

Application / Specifications Text
Rigid earthing fixed point for welding to a reinforcement and for flush imbedding into concrete with connection thread M12 on one side.

order no.: GE-A/L

(L = earthing length in mm)



Subsequent Duct Earthing

Application / Specifications Text
Rigid insulated duct for subsequent installation with connection on both sides (bolt M12, four-wire connector).

order no.: GE-ND

(standard length 500 mm)
(wall thickness up to 450 mm)

All earthings supplied without connecting elements!

For special applications please do not hesitate to contact our technical department.

We provide replacements for all parts which are impaired in their function due to faults in the material. No replacement for defects that are due to transport or storage or result from faulty processing or installation or the effects thereof. Our specifications are based on the current state of the art. Subject to technical modifications. Due to the amount of possible influences during installation and application our specifications do not release processors and users from checking and testing the material themselves.

Sealing systems and fire protection for cables and pipes

UGA SYSTEM-TECHNIK GmbH & Co.

Technical Systems and Products for integration into buildings

